

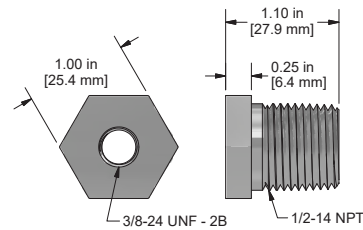
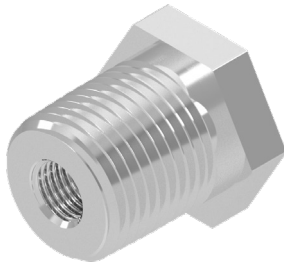
DM901

Standard Mounting Bushings for
8mm Proximity Probes



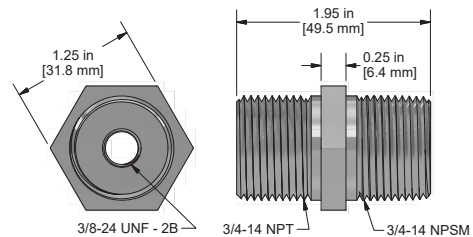
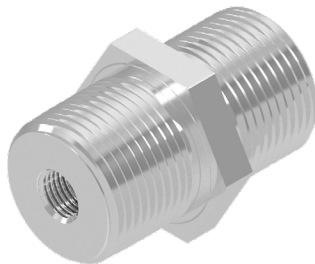
DM901-1A

Stainless Steel, 1/2-14 NPT Mounting Bushing with 3/8-24 Threaded Hole



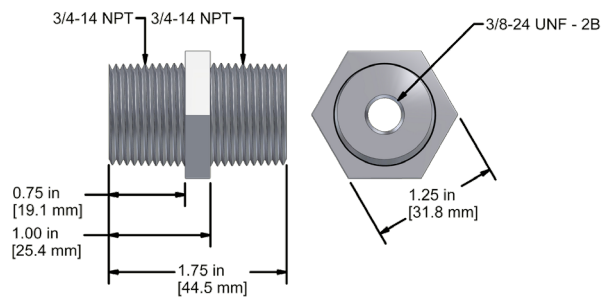
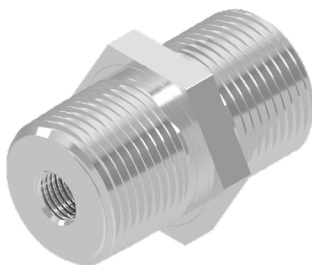
DM903-1A

Stainless Steel, 3/4-14 NPT to 3/4-14 NPSM Mounting Bushing with 3/8-24 Threaded Hole



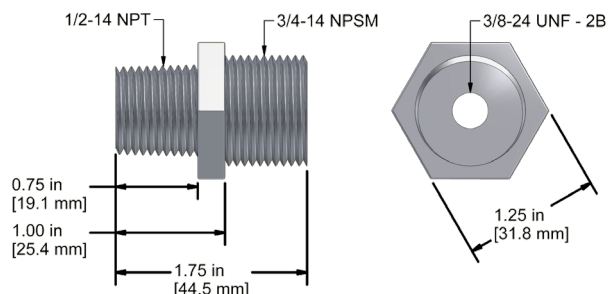
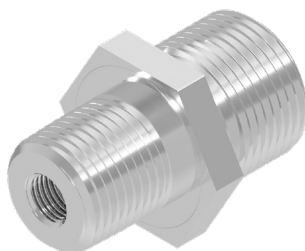
DM904-1A

Stainless Steel, 3/4-14 NPT to 3/4-14 NPT Mounting Bushing with 3/8-24 Threaded Hole



DM905-1A

Stainless Steel, 1/2-14 NPT to 3/4-14 NPSM Mounting Bushing with 3/8-24 Threaded Hole



Backed by our Unconditional Lifetime Warranty

www.ctconline.com | sales@ctconline.com | 585-924-5900