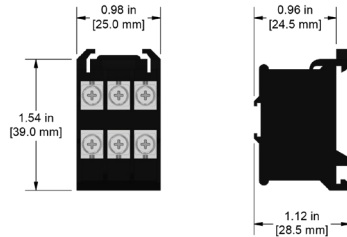
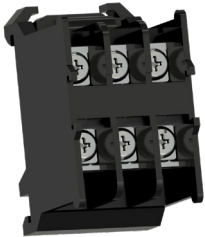


# Specialty Terminal Blocks

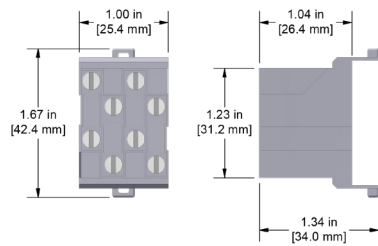
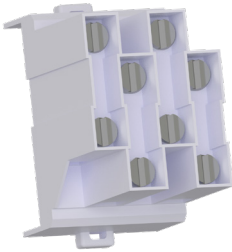


## JB934-1A



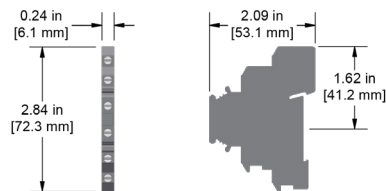
Terminal Block, Three Position,  
DIN Rail Mountable, for use with  
SCD Junction Boxes

## JB934-2A



Terminal Block, Four Position,  
DIN Rail Mountable, for use with  
SCE Junction Boxes

## JB939-1A



Three-Position Terminal Blocks Aligned in  
One Row, for use with CRHT, PM130, PMX,  
PXE, and SCD Junction Boxes