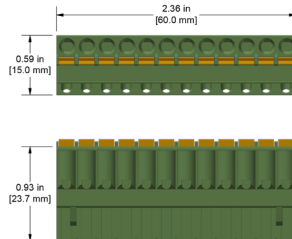
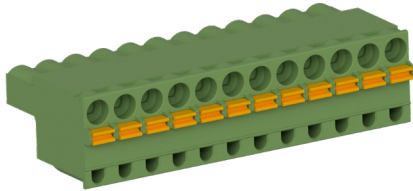


Junction Box Terminals

Multi-Position Plugs for Continuous Output
Junction Boxes

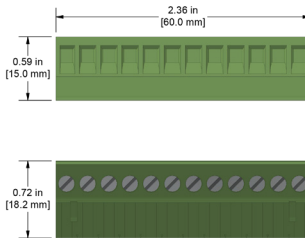
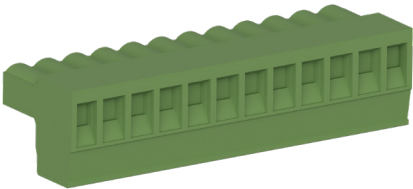


JB905-1A



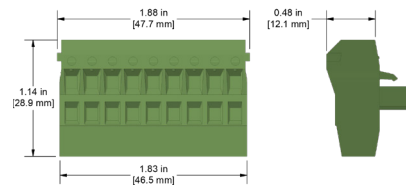
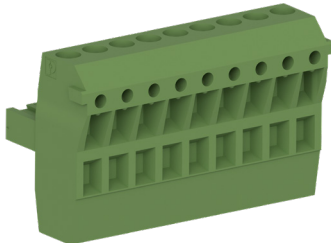
Twelve-Position Plug, Spring Cage, for
Connection to Online System Interface
Jacks on CTC SB Series Switch Boxes*

JB905-2A



Twelve-Position Plug, Screw Terminal, for
Connection to Online System Interface
Jacks on CTC SB Series Switch Boxes*

JB907-4A



Nine-Position "T" Plug, Screw Terminal, for
Continuous Output Pass Through in
MMX-MOD3 Modules†

*One block will accommodate 6 channels

†One block will accommodate each module